

Black Bear Hoist Parts

Phone: 504-616-8789
 Fax: 504-367-9005
 Toll Free: 877-97-HOIST



Parts Pricing and Order Form

Fax , E-Mail or Phone

Company: _____

Contact: _____

Phone #: _____

Fax #: _____

E-Mail: _____

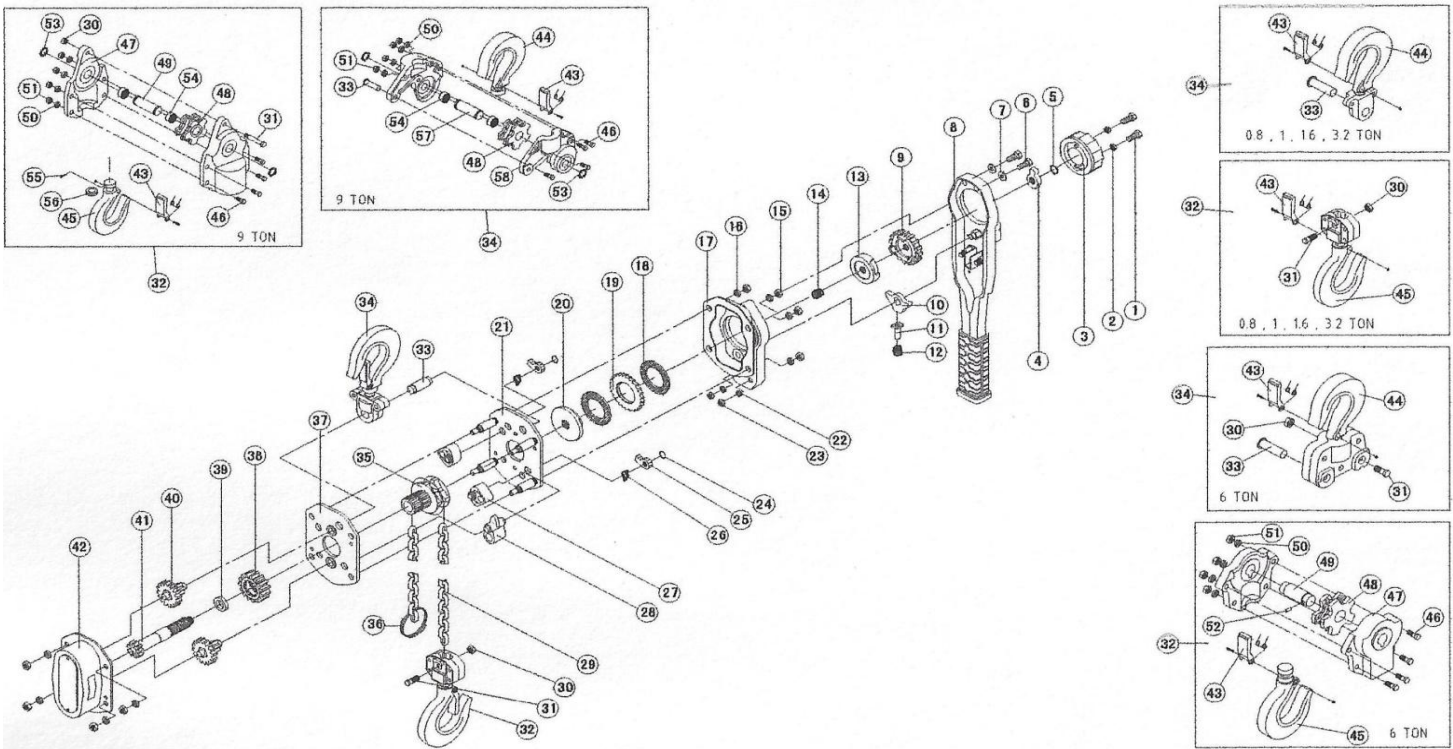
Ship To Address: _____

NOTE:

- 1) 1 L. Ft. = 1 Linear Foot
- 2) All prices subject to change without notice.
- 3) All prices in U.S. Dollars - F.O.B. Fontana, California, Prepaid & Add
- 4) Price does not include freight or taxes

Black Bear Lever Chain Hoist - 0.80 Ton (YL-080)

August, 2009



Key No	Part Number	Part Name	Qty Req	Price (each)	Quantity Needed
1	L1401	Hex. Recess Bolt	2	\$1.04	
2	L1441	Spring Washer	2	\$1.04	
3	L1001	Hand Wheel	1	\$7.29	
4	L1002	Stopper	1	\$2.08	
5	L1461	C-Ring	1	\$2.08	
6	L1402	Hex. Bolt	2	\$1.04	
7	L1442	Spring Washer	2	\$2.08	

Black Bear Lever Chain Hoist - 0.80 Ton (YL-080)

August, 2009

Key No	Part Number	Part Name	Qty Req	Price (each)	Quantity Needed
8	L1003	Lever Outside Assembly	1	\$24.96	
9	L1004	Feed Gear	1	\$10.42	
10	L1005	Feed Ratchet	1	\$3.13	
11	L1006	Ratchet Spring Pin	1	\$2.08	
12	L1007	Ratchet Spring	1	\$1.04	
13	L1011	Feed Gear Cover	1	\$7.29	
14	L1012	Free Wheeling Spring	1	\$1.04	
15	L1421	Hex. Nut	8	\$1.04	
16	L1443	Spring Washer	8	\$1.04	
17	L1010	Lever Inside Assembly	1	\$19.75	
18	L1013	Brake Disk	2	\$3.13	
19	L1014	Ratchet Wheel	1	Contact Us	
20	L1015	Disk Hub	1	\$4.17	
21	L1201	Lever Side Plate Assembly	1	\$19.75	
22	L1444	Spring Washer	2	\$1.04	
23	L1423	Hex. Nut	2	\$1.04	
24	L1462	E-Ring	2	\$1.04	
25	L1205	Ratchet	2	\$5.21	
26	L1206	Ratchet Spring	2	\$4.17	
27	L1203	Chain Guide	2	\$13.50	
28	L1202	Chain Stripper	1	\$7.29	
29	L1901	Load Chain (1 L. Ft. 5.6mm*17	1	\$7.00	
30	L1422	Nylon Lock Nut	1	Contact Us	
31	L1214	Bolt	1	Contact Us	
32	L1215	Bottom Hook Assembly	1	\$21.83	
33	L1210	Top Hook Pin	1	\$1.04	
34	L1208	Top Hook Assembly	1	\$19.75	
35	L1216	Load Sheave Assembly	1	\$11.46	
36	L1213	Chain Stopper	1	\$2.08	
37	L1211	Gear Side Plate Assembly	1	\$11.46	
38	L1217	Fourth Gear	1	\$14.54	
39	L1218	Washer	1	\$1.04	
40	L1219	Second/Third Gear Assembly	2	\$16.63	
41	L1220	Pinion Gear	1	\$18.71	
42	L1221	Gear Case Assembly	1	\$11.46	
43	L1209	Safety Latch Assembly	2	\$8.25	
44	L1222	Top Hook	1	\$10.33	
45	L1223	Bottom Hook	1	\$10.33	
46	L1403	Hex. Recess Bolt	8	\$2.08	
47	L1224	Lower Hook Block Half	2	\$9.38	
48	L1225	Sheave Wheel	2	Contact Us	
49	L1226	Sheave Shaft (Bottom Hook)	1	Contact Us	
50	L1445	Spring Washer	8	\$1.04	
51	L1424	Hex. Nut	8	\$1.04	

Black Bear Lever Chain Hoist - 0.80 Ton (YL-080)

August, 2009

Key No	Part Number	Part Name	Qty Req	Price (each)	Quantity Needed
52	L1227	Spring Pin	1	Contact Us	
53	L1463	C-Ring	4	Contact Us	
54	L1228	Needle Bearing	4	Contact Us	
55	L1229	Dowel	1	\$1.04	
56	L1230	Rolling Bearing	1	Contact Us	
57	L1231	Sheave Shaft (Top Hook)	1	Contact Us	
58	L1232	Upper Hook Block Half	2	\$7.29	
59	NO PN	Rubber Cover		Contact Us	
60	L1230	Rolling Bearing - YL-900 Only		Not Used	
61	NO PN	Hex. Recess Bolt - YL-900 Only		Not Used	
62	NO PN	Retaining Ring - YL-900 Only		Not Used	
63	NO PN	Nylon Lock Nut - YL-900 Only		Not Used	
64	NO PN	Nylon Lock Nut - YL-900 Only		Not Used	
65	NO PN	Warning Plate		\$5.25	
66	NO PN	Name Plate		\$5.25	
67	NO PN	Class Plate		\$2.08	

Comments:

[Short Form Available \(Click Here\)](#)

[BlackBearHoist.com - Home Page - Left Hand Side - Parts Order Forms](#)



 **MBI** Monzon Brothers, Inc

MBI Crane & Hoist

Material Handling Products and Services

Address: 74 1st. Street, Gretna, LA 70053

Mailing Address: PO Box 740875 New Orleans, LA 70174

Office: 504-616-8789 Fax: 504-367-9005 Toll Free: 1-877-97-HOIST (1-877-974-6478)

Office Hours: Monday - Friday 9:00 am - 5:00 am CST

Email: mbi@mbicraneandhoist.com

Web: www.blackbearhoist.com / www.mbicraneandhoist.com